

# HIGHFRONTIER

## Accommodations - Info Sheet

### The Studios

Featuring vibrant D'Hanis red brick facades and open space floor plans, each unit has its own private bath, a king size bed and outdoor porch overlooking the mountains.

#### -Unit 1

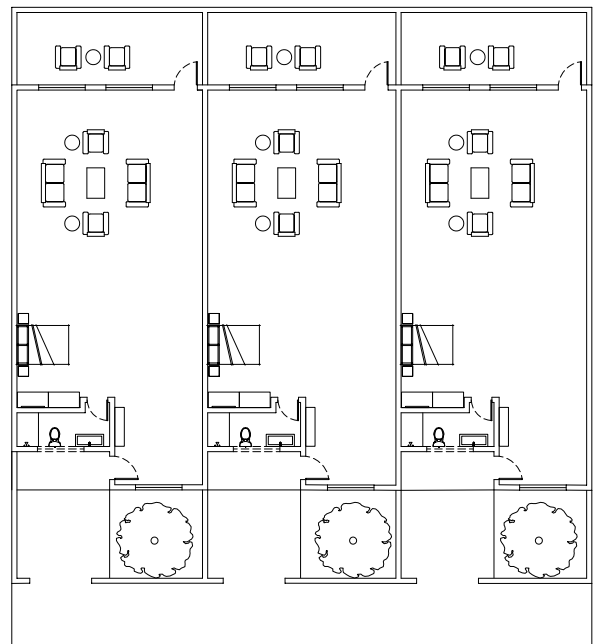
- 1,285 sqft., open space floor pan
- 1 BR / 1 BA
- King bed
- Seating area
- Walk-in shower
- Private outdoor back-porch
- Max occupancy: 2

#### -Unit 2

- 1,285 sqft., open space floor pan
- 1 BR / 1 BA
- King bed
- Seating area
- Walk-in shower
- Private outdoor back-porch
- Max occupancy: 2

#### -Unit 3

- 1,285 sqft., open space floor pan
- 1 BR / 1 BA
- King bed
- Seating area
- Walk-in shower
- Private outdoor back-porch
- Fireplace
- Max occupancy: 2



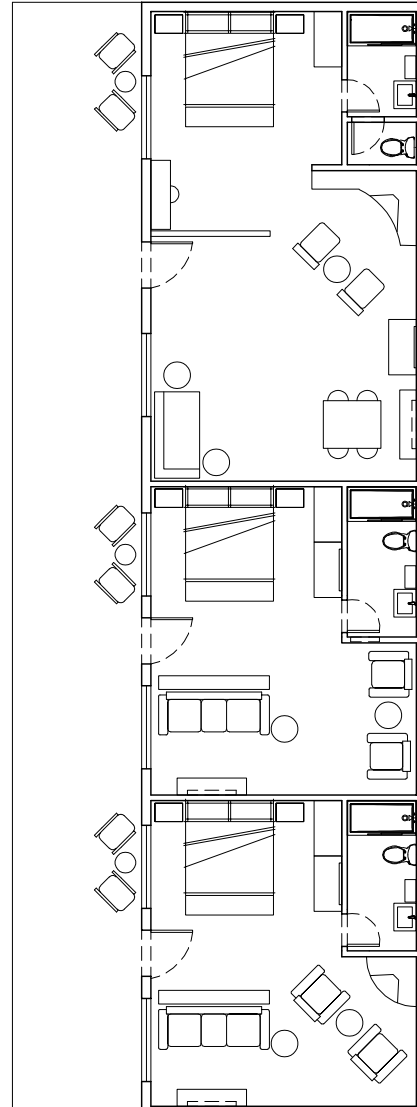
## The Bunkhouse

Constructed in 1910, during Highfrontier's days as a working ranch, The Bunkhouse features three individual units, each with a king size bed, private bath, and front porch sitting area. Two of the units feature their original stone fireplaces, harking back to the property's deep history.

- Unit 1
- 650 sqft
- 1 BR / 1 BA
- King bed
- Walk-in shower
- Seating area
- Kitchenette / dining area
- Original stone fireplace
- Shared front porch
- 1 day bed
- Max occupancy: 3

- Unit 2
- 426 sqft
- 1 BR / 1 BA
- King bed
- Walk-in shower
- Seating area
- Shared front porch
- Max occupancy: 2

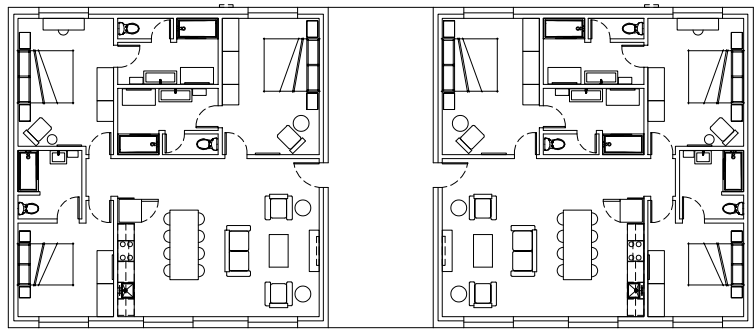
- Unit 3
- 343 sqft
- 1 BR / 1 BA
- King bed
- Walk-in shower
- Seating area
- Original stone fireplace
- Shared front porch
- Max occupancy: 2



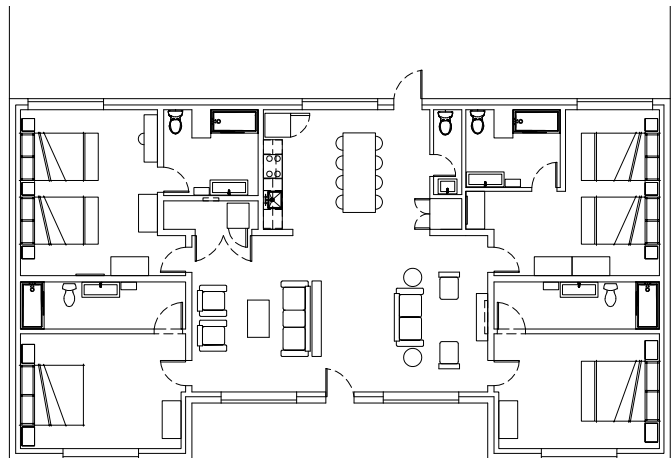
## The Field Houses

Surrounding an expansive lawn and gathering place at the heart of the property, The Field Houses consist of five independent structures, totaling seven units. Houses vary in size and offerings, each with private bath, spacious living room, full kitchen, and outdoor seating areas.

- Unit 1A
- 1,496 sqft
- 3BR / 3BA
- 2 King beds
- 1 Queen bed
- Full kitchen / dining area
- Living room
- Outdoor porch
- Max occupancy: 6

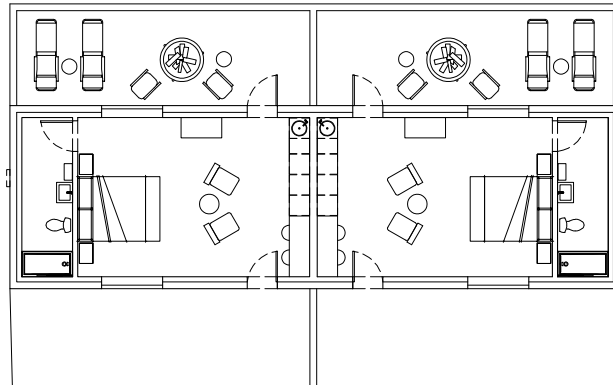


- Unit 1B
- 1,507 sqft.
- 3BR / 3BA
- 2 King beds
- 1 Queen bed
- Full kitchen / dining area
- Living room
- Outdoor porch
- Max occupancy: 6

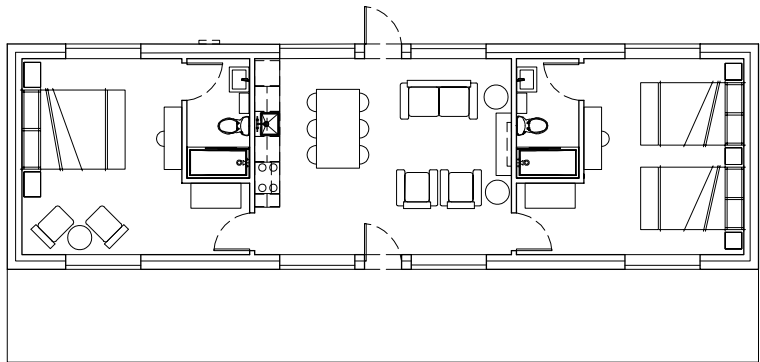


- Unit 2
- 2,489 sqft
- 4BR / 4.5BA
- 2 King beds
- 4 Queen beds
- Full kitchen / dining area
- Living room
- Outdoor porch
- Max occupancy: 12

- Unit 3A
- 543 sqft
- 1BR / 1BA
- King bed
- Kitchenette
- Outdoor porch
- Max occupancy: 2

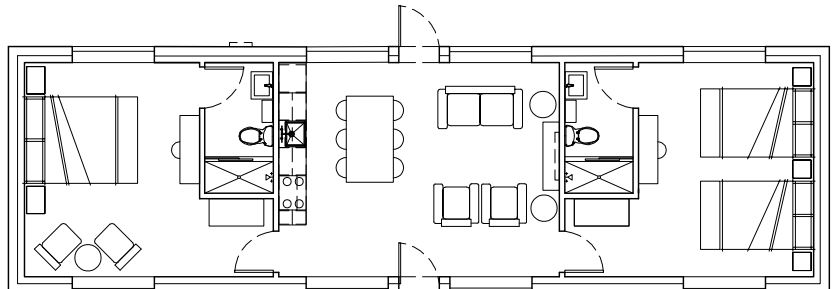


- Unit 3B
- 543 sqft
- 1BR / 1BA
- King bed
- Kitchenette
- Outdoor porch
- Max occupancy: 2



- Unit 4
- 1,080 sqft
- 2BR / 2BA
- 1 King bed
- 2 Queen beds
- Full kitchen / dining area
- Living room
- Outdoor porch
- Max occupancy: 6

- Unit 5
- 1,080 sqft
- 2BR / 2BA
- 1 King bed
- 2 Queen beds
- Full kitchen / dining area
- Living room
- Outdoor porch
- Max occupancy: 6



## Ranch House and Ranch House Studio

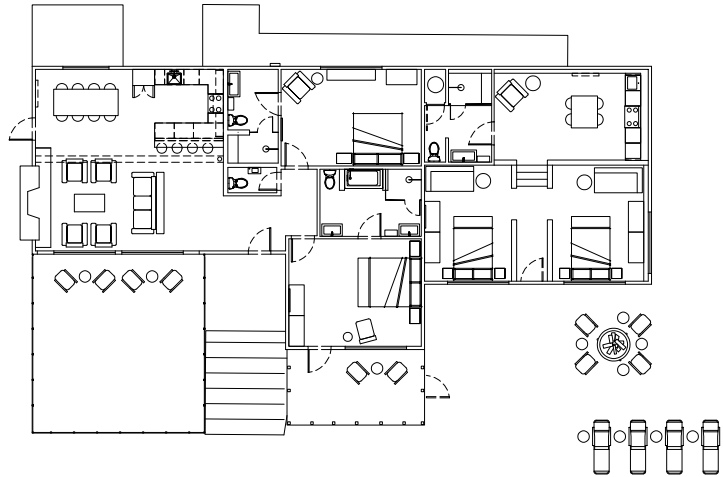
The Ranch House is a perfect setting for small group get-aways, intimate events, and relaxed entertaining. A 4BR/3.5BA house, consisting of two adjacent units, with two kitchens, living areas, original stone fireplace, and two spacious outdoor terraces ideal for receptions.

### Ranch House

- 1,417 sqft
- 2BR / 2.5 BA
- 2 King beds
- full kitchen / dining area
- living room
- fireplace
- Max occupancy: 4

### Ranch House Studio

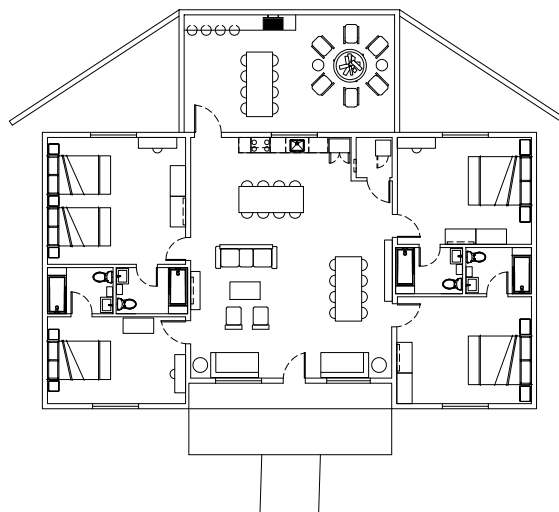
- 847 sqft
- 2 BR / 1 BA
- 2 Queen beds
- 2 day beds
- Max occupancy: 6



## Mary's House

Boasting a unique identity, interior design, and unobstructed mountain views, Mary's is a spacious 4BR/4BA, with living room, full kitchen, and outdoor living area.

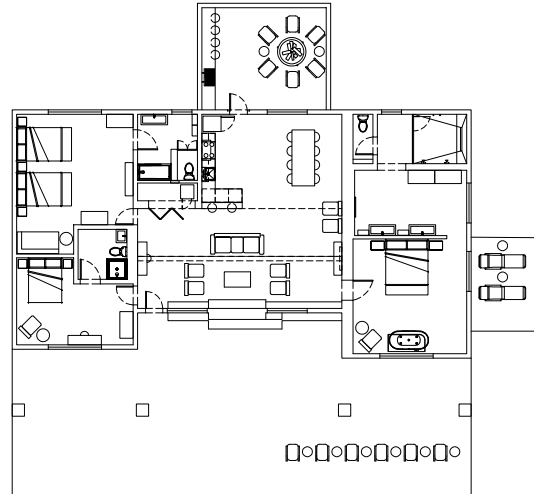
- 2,135 sqft
- 4 BR / 4 BA
- full kitchen / dining area
- living room
- outdoor living room
- 2 King beds
- 2 Queen beds
- 2 daybeds
- Max occupancy: 11



## Adobe House

Overlooking Musquiz Canyon and perched atop a point with some of the best views on the property, the historic adobe house is ideal for family retreats, small gatherings and intimate celebrations.

- 2,425 sqft
- 3BR / 3BA
- 1 King bed
- 3 Queen beds
- full kitchen / dining area
- living room
- fireplace
- outdoor area
- Max occupancy: 9



## Rock House

Out-of-view from the rest of the property, Rock House provides the ideal vacation get-away or family retreat, complete with stunning mountain and night sky views. A 3BR/ 3BA house with full kitchen, living and dining areas, fireplaces, and shaded porches.

- 3BR / 3BA
- 2 King beds
- 2 Twin beds
- full kitchen / dining area
- living room
- outdoor porch
- fireplace
- 1885 sqft interior
- 924 sqft porch area
- Max occupancy: 6

